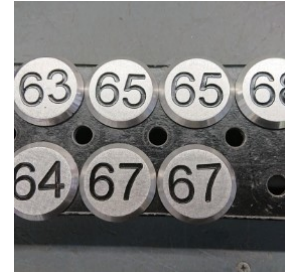




PLAIN BRASS PAVING STUD

Product Code: SFD705



PRODUCT DESCRIPTION

Brass Paving Stud, design is a plain top with a standard diameter of 25mm, each stud is 35mm in length. We have major discounts for large volumes.

Our range of Tactile Paving Studs serve for a variety of applications. The studs provide a textured ground surface indicator for footpaths, stairs and train station platforms to assist blind and vision impaired pedestrians.

SPECIFICATIONS

Weight	0.03 kg
Depth	18mm
Diameter	25mm
Fixing	Root Fixed
Material	Brass
Colour	Galvanised