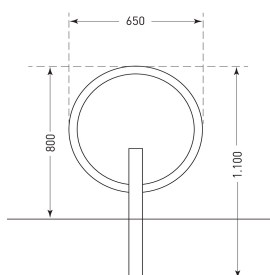




CITY GIRO BICYCLE STAND

Product Code: SFD418



STANDARD POWDER COATED STEEL RAL COLOURS



People colours are also available in copper, black & grey. Please contact for more information. Call 01625 879 442 or email enquiries@streetfurnituredirect.co.uk

PRODUCT DESCRIPTION

The City Giro Bicycle stand is designed to blend in with its surroundings, yet provides a functional method of securing bicycles. Available in two finishes and can be sub-surface fixed or surface fixed.

Sturdily constructed in steel tube and finished with hot dip galvanised and powder coated in Anthracite iron mica DB 703. This product will provide outstanding service.

*Powder coating may require a longer lead time

SPECIFICATIONS

| | |
|----------|------------------|
| Weight | 11.50 kg |
| Width | 650mm |
| Depth | 70 x 70mm |
| Height | 800mm |
| Diameter | 42mm |
| Fixing | Multiple Options |
| Material | Steel |
| Colour | Galvanised |